

[Subscribe](#)

[Past Issues](#)

[Translate ▼](#)

[View this email in your browser](#)



*Shenandoah Chapter*  
*Conserving Wild Flowers and Wild Places*



[Visit our website](#)

welcome Spring.



Virginia springbeauty, *Claytonia virginica* with what is likely a spring beauty mining bee (*Andrena erigeniae*) at Heron Cove by Steven David Johnson.

**Subscribe**

**Past Issues**

**Translate ▼**

[shenandoahchapter@gmail.com](mailto:shenandoahchapter@gmail.com)

---

**Subscribe**

**Past Issues**

**Translate ▼**

# Mayapple

*Podophyllum*  
*peltatum*



2025  
Virginia Wildflower  
of the Year



---

Our own Betty Gatewood has her Mayapple drawing featured on this year's wildflower of the year [brochure!](#)

---

## Upcoming Events

- **Unlucky 13, Blue Ridge PRISM Webinar**, Wednesday, March 26, 12-1pm.  
Free webinar to learn more about the 13 new additions (including Butterfly bush) to the Va Invasive Species Plant List and other common invasives as well as control tactics. More information and sign up on their website [here](#).

- **Sustainability Matters Webinar**, Thursday, March 27, 7pm.

### [Stories and Strategies for Growing Native Spaces](#)

Learn how to create native meadows and gardens, explore the benefits of native plants, and get practical tips to start your own project. Whether you have acres of land or just a garden bed, you'll leave inspired to boost biodiversity!

Can't attend live? [Register](#), and you will receive the recording after the webinar.



- [Joshua Trey Barnett](#) an award-winning scholar and teacher from the Department of Communication Arts and Sciences at Penn State will be on JMU's campus **April 2 and 3** to give a public talk and facilitate a workshop.
  - **LECTURE:** Wednesday, April 2, 5:30-6:45, ENGO 1301 JMU  
**Ghost Trees of Shenandoah National Park and the Ethics of Care**  
 How do people come to care about threatened and endangered species? In this talk, I transport readers to Shenandoah National Park, where most of the eastern hemlocks died in the early 2000s after the hemlock woolly adelgid arrived. Although hemlocks survive in isolated stands, many dead hemlocks still pepper the landscape. Building on new materialist theories of rhetoric, I examine how these so-called ghost trees move people to care for them. In particular, I show how dead and dying hemlocks make ethical claims upon those who encounter them.
  - **WORKSHOP:** Thursday, April 3, 2:20-3:35, King Hall 259, JMU  
**Beyond Hope and Despair: Cultivating Ecological Feelings for Earthly Coexistence**  
 We live in a time of interlocking social and ecological crises, and your workshop host wants to know how you feel about it. In this workshop, participants will explore a variety of ecological feelings beyond the clichéd hope-despair dichotomy. We will consider how ecological feelings like anger, apathy, care, fear, grief, joy, optimism, and rage influence us. In doing so, we will reflect on how our feelings motivate our thoughts, judgments, and actions. More importantly, we will consider how we might collectively cultivate those feelings that lead to a more just and caring earthly coexistence.
- **Invasive Plant ID Walk** | Blue Ridge PRISM, EJC Arboretum at JMU. April 2, 10 - 11:30am. Each season, the arboretum offers two free invasive management workshops in collaboration with Blue Ridge PRISM. Come to the arboretum for an Invasive Plant ID Walk and an Invasive Plant Removal Workday! Spaces limited to 20. [Register here](#).
- **Guided Walk at Jarman Gap**, April 12 at 10am, Join Mark and Betty Gatewood for an afternoon walk at Jarman Gap. Showy orchid is the target!

- **Seven Bends Nursery Conservation Event**, April 12, 9am - 2pm, more information on their social media pages: [Instagram](#) and [Facebook](#).
- **VNPS Virtual Book Club**, contact [Eunice Sill](#) for more information. April 15, 7pm via Zoom. *Nature of Oaks*.
- **Restoration After Invasive Plant Removal, Blue Ridge PRISM Webinar**, Wednesday, April 16, 11:30am - 1pm. Free webinar with Maddie Bright of [Earth Sangha](#) discussing site restoration with native plants. More information and sign up on their website [here](#).
- **Spring Plant Sale**, Saturday, April 26 at Gypsy Hill Park, event by Earth Day Staunton.
- **Spring Native Plant Tour**, May 3rd and/or 4th
  - Please consider hosting! Short interest [survey here](#).
  - Direct all questions to [Katy](#).
- **Spring Migration: Bird Walk**, Friday, May 9 at 9:00am. Event through [Shenandoah Valley Conservancy](#) (Ridge & Valley Plant Guide partner organization). Encounter spring migratory birds in a protected wildlife corridor and learn about bird-friendly farming practices with biologists from the Virginia Grasslands Bird Initiative. *Bring binoculars. SVC would love to have people knowledgeable about native plants as well as bird enthusiasts join this walk!* [RSVP here](#).
- **Guided Walk at Augusta Springs Wetlands**, May 24, 10am. Join Mark and Betty Gatewood at [Augusta Springs Wetlands in the George Washington National Forest](#). While this is not a wildflower hotspot, there are ponds, wetlands, and upland forests making it a great place to enjoy the beginning of spring. More information on our website [here](#).
- **Nature Journaling and Botanical Art Workshop**, May 31 from 10am - 2pm, with Betty Gatewood at the Edith J. Carrier Arboretum. Registration required, spaces are limited! More information on our website [here](#).



- **Doctor's Orders: Black Heritage / Native Plant Walk**, June 14 at 10am.  
Event through [Shenandoah Valley Conservancy](#) (Ridge & Valley Plant Guide partner organization). Team up with Shenandoah Black Heritage Project and herbalist Ruby Daniels, owner of Creasey Jane's Herbal Remedies, to learn about medicinal plants used within the African-American community. We will explore Zenda, a black heritage site. SVC *would love to have people knowledgeable about native plants on this walk!* [RSVP here](#).
- **Wildflower walks!** We would love to offer more guided walks this spring and summer. If you would like to lead a walk, please [contact Katy](#).
- **Fall Native Plant Tour**, September.
  - Please consider hosting! Short interest [survey here](#).
  - Direct all questions to [Katy](#).

---

## ***We are looking for host sites for our Native Plant Tours:***

***Please consider hosting!*** Your plantings do not need to be perfect or pristine! We'd love to have a range of planting stages and types to showcase the different life stages and possibilities of planting with natives. We are hoping this tour will attract not just native plant enthusiasts, eager to see what others are doing, but also novice gardeners, and those interested in learning more about natives. We are looking for all kinds of locations: small urban gardens, fully landscaped yards, reclaimed meadows, woodlands, and those in transition from conventional to native plantings and everything in between. We are also planning for a fall tour in September. Please fill out this [interest survey](#) if you are considering in hosting for either tour.

- Spring Plant Tour (you can host one day or both):
  - May 3rd, 10am - 1pm
  - May 4th, 1pm - 4pm
- Fall Plant Tour: September
  - Date and time based on host site availability

- Direct all questions to [Katy](#).

## Volunteer Opportunities

- **Picnic + Pulling Invasives**, at Natural Chimneys Park, March 23 from 12 - 2:30. More information on our website [here](#).
- **Cub Run Elementary School Earth Day**, Thursday, April 24 from 9:00 A.M. to 12:00 noon. Students in grades 3-5 will rotate through sessions lasting 15 minutes. Sessions can be structured in a way that aligns with your preferred style – whether it's a show-and-tell, hands-on activity, a game, or any format that best conveys your message. The more interactive the better. Contact [Anna Maria](#) to volunteer.
- **Garlic Mustard Pull Events**
  - **Saturday, April 12 on Shenandoah Mountain** north of Briery Branch gap near the least trillium site. Road may be too rough for low clearance vehicles. Will meet at site at 9am. Carpooling from Harrisonburg is possible, depending on interest. Rain date on April 19. Garbage bags will be provided. Contact Mike Smith for further information: 540-713-8313.
  - **Saturday, April 26 at Hone Quarry** from 10-12. Organized by Lynn Cameron of Potomac Appalachian Trail Club
- **Invasive Plant Removal Workday** | Blue Ridge PRISM, EJC Arboretum at JMU. Friday, Learn to identify and remove invasive plants that threaten the health & enjoyment of this beautiful natural area Spaces limited to 10. [Register here](#).
- **Spring Plant Sale** on Saturday, April 26 at Gypsy Hill Park, event by Earth Day Staunton.
  - We are looking for plants to sell and people to help! If you would like to volunteer on the day of the event, contact [Lora](#).
  - If you have divisions or rooted cuttings to share contact [Lora](#) in Staunton or [Katy](#) in Dayton or [Ivy](#) in Harrisonburg.

---

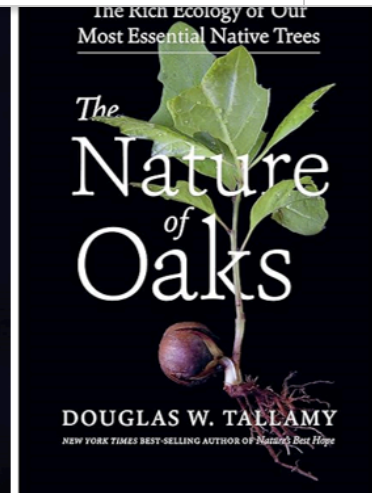
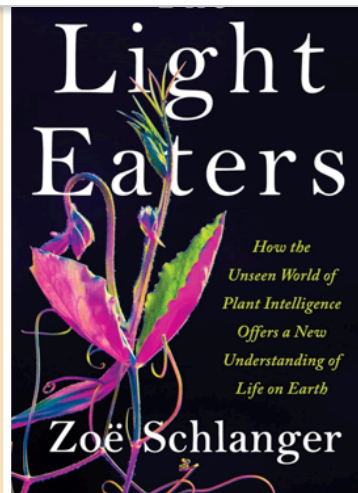
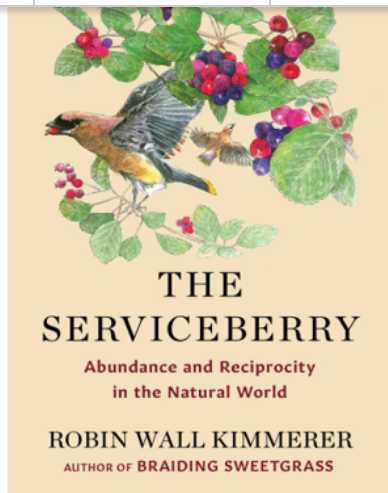
## Blue Ridge PRISM Weed Alert

Wineberry (*Rubus phoenicolasius*)-- sometimes called wine raspberry-- is an invasive shrub that creates prickly, impenetrable thickets. Introduced to North America in the 1890s as breeding stock for raspberries, wineberry displaces native vegetation, including native edible berry shrubs. You can differentiate wineberry from native raspberries because of the reddish appearance of wineberry's stems (caused by a dense coat of red hairs). This makes it easy to spot in early spring before it has leafed out. More information [here](#).

## Did you know...?

Chapter member Eunice Sill has started a **virtual, monthly VNPS book club**! Each month, the club picks a book to be read at your own pace. Virtual meetings to discuss the book are held on the third Tuesday of each month at 7pm. The club started in February with *The Serviceberry* by Robin Wall Kimmerer. March's book was *The Light Eaters* by Zoë Schlanger. We're looking forward to reading and discussing *The Nature of Oaks*, by Doug Tallamy in April. We are so grateful to Eunice for suggesting and spearheading this fun, informative, and social activity.

*Thank you, Eunice, for your contributions to our Shenandoah Chapter and the larger VNPS community!*



If you're interested in joining the book club (with no commitment to read every book or attend every meeting), contact [Eunice](#).

## Ridge & Valley Native Plant Campaign!



## A Gardener's Guide to Virginia's Ridge & Valley Native Plants

The Ridge & Valley Native Plant campaign is hoping to increase our visibility by planting native plant gardens in public areas. If you are interested in participating in this endeavor by helping to locate such areas (perhaps near a library, in a park,

If you know of existing public native plant gardens, please send along that info also, as we would like to promote those on our webpage. To learn more about the various native plant campaigns in Virginia, including our Ridge & Valley, go to [plantvirginianatives.org](http://plantvirginianatives.org).

Donate!

Please send [Elaine Smith](#) any items for the next newsletter!



*Shenandoah Chapter*  
*Conserving Wild Flowers and Wild Places*

*Copyright (C) 2025 Shenandoah Chapter, Virginia Native Plant Society.*  
*All rights reserved.*

Our mailing address is:

Want to change how you receive these emails?  
You can [update your preferences](#) or [unsubscribe](#)

If you were forwarded this newsletter, you can subscribe [here](#).



**Subscribe**

**Past Issues**

**Translate ▼**