



Prince William Wildflower Society
SUMMER WILDFLOWER GARDEN TOUR
Saturday, July 30, 2022
9 a.m. – 1 p.m.

The Prince William Wildflower Society welcomes the public to a summer garden tour, an educational event to highlight the use of native plants in the garden. All featured gardens use a mix of native and nonnative plants and battle with deer damage and invasive plants. To beat the late afternoon heat, visit the gardens in any order between the hours of 9 a.m. and 1 p.m., rain or shine. Bring a water bottle. For further information, contact Nancy Vehrs at nvehrs1@yahoo.com.



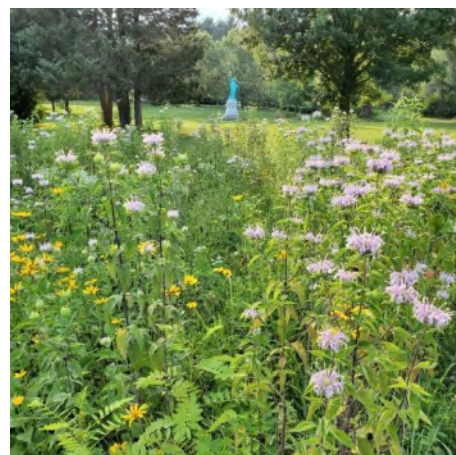
HANCOCK GARDEN
10565 Pineview Road, Manassas, VA 20111

This two-acre property contains a variety of gardens with an emphasis on butterfly host plants. Only in the last three years has attention focused on the use of native plants and removal of nonnatives. An experimental garden in the front yard is designed to deter deer by using native plants that are not to their taste. By the drive's little hill, a fern garden stops erosion. To the right of this is a new native shade garden. In front of the house is a pollinator garden, a canoe garden, and, next to the house, a container garden with natives. On the far side of the house is the owner's beloved Hosta Garden. This past

spring's surprise was the Spotted Wintergreen that popped up in the swing area. Beyond that is the whimsical walk-through garden which contains natives, non-natives, and a few more hostas. The trellis garden in the far back has three native vines. Most of the native plants are labeled with common and botanical names. The garden includes three small above-ground frog ponds and three active birdbaths. Trees in and around the yard include Tulip Poplar, Hickory, Dogwood, Black Cherry, Oaks, Beech, PawPaw, American Holly, young Sassafras and Redbud, and a Silky Dogwood. Certified as a Monarch Waystation and a Certified Wildlife Habitat, the yard is surrounded on three sides by woodland.

NEITZEY GARDEN
17015 Gaines Road, Broad Run, VA 20137

Located near the Bull Run Mountains Natural Area Preserve, this old farmland is being converted gradually to native plant areas and meadows. In addition to two planted meadows, there are transitional meadows where natives are encouraged and invasive plants removed, an ongoing process. Two large meadows were established from seed, and their summer glory includes Narrowleaf Mountain Mint, Wild Senna, Wild Bergamot, Blue Mistflower, Thoroughwort, and various Asters and Goldenrods. The woodland trail section includes pioneer species such as Persimmon, Beaked Panic Grass, White Snakeroot, Dogbane, Wild Basil and Nettle. Other planted gardens include a hillside garden, a hidden garden, and a pollinator garden. Two shade gardens have been managed to crowd out invasive Japanese Stilt Grass. Invasive species management includes removal of Sericea Lespedeza, Korean Clover, and Stilt Grass. Other highlights include Eastern Bluebird and Purple Martin houses and a Statue of Liberty.



TEACHING GARDEN
St. Benedict Monastery, 9535 Linton Hall Road, Bristow, VA

The Teaching Garden is a project of the Virginia Cooperative Extension-Prince William Master Gardener volunteers and is funded solely by the Master Gardeners of Prince William. It is a place to see low maintenance gardening techniques that homeowners can implement in their own gardens and plant material that grows well locally. The St. Benedict Monastery provided this outdoor educational site. The garden is divided into many themed beds with two large sections devoted to native plants. Other beds incorporate natives, such as the deer resistant garden, pollinator garden, and shrub garden.

Basic Directions to the three gardens on Saturday, July 30, 9 a.m. – 1 p.m.

Use your favorite mapping program or the general directions below. Watch for small brightly colored directional signs near the gardens. All gardens are in Prince William County; one is just south of the city of Manassas. and the other two are in western Prince William. Start at any garden; they are listed in alphabetical order here.

Hancock Garden: From the intersection of Liberia Avenue, Wellington Road, and Prince William Parkway in the City of Manassas, proceed south on Prince William Parkway (Rt. 294) toward Woodbridge for one mile. At the traffic signal, turn right onto Moore Drive. Buckhall United Methodist Church is on the corner. At the cemetery on the left, turn right to stay on Moore Drive. Turn right onto Pineview Road. 10565 will be on the right. It is the house that is set back from the road with a large front yard. Parking at the end of the driveway is limited to four or five cars. Carpooling recommended.

Neitzey Garden: Take I-66 west from Manassas. Take Exit 40 to merge onto Rt. 15 South toward Haymarket. Turn right onto Rt. 55 West and drive .9 miles. Turn right onto Antioch Road and drive 1.7 miles. Turn left onto Gaines Road and continue about 1.5 miles almost to the end. 17015 is on the left.

Teaching Garden at the Benedictine Monastery: From the City of Manassas, proceed south on Rt. 28/Nokesville Rd in Manassas, turn right at the traffic signal at Linton Hall Road. Drive 1.6 miles then turn right to enter the Linton Hall School/Benedictine Monastery grounds. Proceed to traffic circle. Bear right and exit the circle at about 10:00 (Monastery residence is at 12:00) onto service road. Proceed to parking in fenced area on left. If that lot is full, backtrack to behind Linton Hall School to the blacktop area for parking. Please do not park in the areas past the Teaching Garden, as those are reserved for a memorial service at the Columbarium. *Please do not drive on the grass.*



Prince William Wildflower Society
A Chapter of the Virginia Native Plant Society
www.vnps.org/princewilliamwildflowersociety
PO Box 83
Manassas, VA 20108-0083

